



Tickets Now On Sale!

22ND ANNUAL

WOMEN WHO MEAN BUSINESS AWARDS

Wednesday, November 18, 2015

Town and Country Resort & Convention Center

500 Hotel Circle North

11:00 a.m. Registration • 11:30 a.m. - 2:00 p.m.
Special Awards Reception and Luncheon

This event recognizes dynamic women business leaders and role models who have contributed significantly to San Diego's businesses.

Congratulations to the Finalists

AWARDS OF DISTINCTION

Lifetime Achievement Award



Arline Fisch
Artist, Author, Teacher, Innovator

Community Service Award



Joan Embery
The Embery Institute for Wildlife Conservation

Exemplary Service Award



Magda Marquet, PhD
Founder and Co-Chair Ajinomoto Althea, Inc.

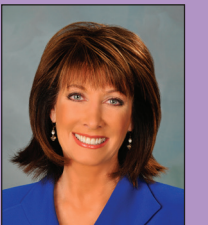
- | | | | | |
|---|---|--|--|--|
| Becky Abarca SolidProfessor | Allison Blake WorthPointe Financial | Alessandra Ceresa GreenRope | Tiffany David New Horizons Computer Learning Centers of Southern California | Alison Fleury Sharp HealthCare |
| Dana Abplanalp-Diggs The Grauer School | Celeste Blodgett ESET North America | Gina Champion-Cain American National Investments, Inc. | Renee Davis Togally | Melissa Ford Vektrex Electronic Systems, Inc. |
| Ashley Adam The Dailey Method, LLC | Jennifer Borba von Stauffenberg Olive PR Solutions, Inc. | Alexandra Chrisman Dealstruck, Inc. | Sarah Davis FASHIONPHILE, Inc. | Judy Foster Womens Wisdom |
| Laura Alexon Willey Blo Gaslamp | Shelley Bradley Better Business Bureau serving San Diego, Orange and Imperial Counties | Claudia Cinco MRC Smart Technology Solutions | Alicia I. Dearn Bellatrix PC | Shannon Foster Kimpton Hotels and Restaurant Group, LLC |
| Olga Alvarez Heisner Alvarez, APC | Amy Breen Teva Pharmaceuticals USA | Marie Clark Clark Architects, Inc. | Kelly Decker JaxKelly | Natalie Freitas Olins Riviere Coates and Bagula, LLP |
| Renae Arabo RJS Law | Bobbi Brink Lions, Tigers & Bears | Colleen Collazo Community Resource Center | Monica Denosta Picture it on Canvas | Ann Fulcher UC San Diego Health |
| Alana Asmussen Dowling & Yahnke, LLC | Nisha Bunke La Jolla Vein Care | Randa Coniglio San Diego Unified Port District | Mary Diamond Tri-City Medical Center | Kimberly Gallo First 5 San Diego |
| Paola Avila San Diego Regional Chamber of Commerce | Jeanette Bunn Travel To Go | Jaye Connolly-LaBelle RippleNami, Inc. | Danielle Dietz-Livolsi Nuttzo | Victoria Garcia Marketing Impressions |
| Seher Awan San Diego City College | Tara Burd T. Burd Law Group | Rabbi Laurie Coskey Interfaith Center for Worker Justice of San Diego County | Didi Discar Carling Communications, Inc. | Meagan E. Garland Cara & Garland, APLC |
| Deanna Bagdasar RJS Law | Lucy Burni Burni Enterprises | Heidi Cramer Emilio Nares Foundation | Tina Donaldson Google, Inc. | Pollie Gautsch G&A Legal, APC |
| Marci Bair Bair Financial Planning | Taylor Butler WestAir Gases & Equipment, Inc. | Kimberly Caccavo Katherine Nowlan GRACEDBYGRIT, Inc. | Jorgine Ellerbrock Hologic, Inc. | Helena Gibson Strut Hair Solutions |
| Jennifer Barnes Pro Back Office, LLC | Madeline Cahill Cahill & Campitiello | Elizabeth Cullington HoyleCohen, LLC | Karolina Ericsson, Esq. Gresham Savage Nolan & Tilden, PC | Meg Gneiting Positive Adventures |
| Teresa Beck Law Offices of Lincoln, Gustafson & Cercos, LLP | Adriana Cara Cara & Garland, APLC | Deb Currier Smith TRPZ.com | Cherri Ewing NB Baker Electric Inc. dba Baker Electric Solar | Cindy Gompper-Graves South County Economic Development Council |
| Ann Berchtold ART SAN DIEGO / Redwood Media Group | Kayla Carnevale Dynamik, Inc. | Sarina Dahukey gap intelligence | Manijeh Farrokhi GKN Aerospace | Erin Krehbiel ACI Specialty Benefits Corporation |
| Claudette Berwin Gallery Properties | Mio Casper Jassim & Associates | Hilary Dargavell RJS Law | Leslie Fishlock Geek Girl | Cecilia Kucharski Balfour Beatty Construction |
| Mary Searcy Bixby Altus Institute Network of Charter Schools | Diana Cavagnaro Couture Millinery | | Mindy Fletcher Crux Partners | Virginia Kuwahara UBS Financial Services, Inc. |
| Megan Black Piston Agency | | | | |

- | | | | | |
|--|---|---|--|--|
| Chris Guglielmo Cubic Corporation | Brook Larios PlainClarity | Darlyne Menkin Where You Want To Be Tours, Inc. | Lisa Rowe Barrett Business Solutions Inc. | Monika Tuncbilek DrainHelp.com |
| Christina Gustin UBS Financial Services, Inc. | Annie Lawless Suja Juice | Ginny Merrifield CONNECT | Stephanie Saathoff The Clay Company, Inc. | Elettra Venosa Space Micro, Inc. |
| Malena Hagerman SprinkleBit | Robin Layton Educational Enrichment Systems, Inc. | Kris Michell Downtown San Diego Partnership | Amelia D. Sanchez Crosbie Gliner Schiffman Southard & Swanson LLP | Cristina Versari San Diego University for Integrative Studies |
| Jamie Hampton Mixte Communications | Angela Leavitt Mojo Marketing, LLC | Heather Milne Barger San Diego Workforce Partnership, Inc. | Samantha Sanchez SolidProfessor | Natalie Viani Outsource Technical LLC |
| Marcia Hansen Motivate, Inc. | Kathryn Lembo South Bay Community Services | Emily Moberly Traveling Stories | Korrie Scales The 220 Group, LLC | Carolina Vivas Buddhi Yoga Studio |
| Karen Harrison Bank of America, NA | Bena Leslie 6 Degrees Business Networking | Lupita Morales Fresh Start Surgical Gifts | Suzanne Schlundt Cox Communications | Bess Wakeman JLL |
| Mervat Hassan UBS Financial Services, Inc. | Alessandra Lezama Abacus Data Systems, Inc. | Ashley Morgan Realty Changers | Julie Seal Mirus Promotions | Ashley Walton Aptus Court Reporting |
| Chanelle Hawken San Diego Regional Chamber of Commerce | Courtney Liddy UBS Financial Services, Inc. | Anna Nevares Redfin | Kristen Seal Titan SEO | Jen Weissman Project X Brand Lab |
| Katie Hess gap intelligence | Shavon Lindley Women Evolution | Tina Ngo Bartel San Diego Workforce Partnership, Inc. | Jenny Smerud AKT LLP | Samantha Welker Wright Brothers, Inc. |
| Tara Hoffman Bob Hoffman Photography & Video | Amy Lisewski Finest City Improv | Molly Nocon Noah Homes | Allison Soares RJS Law | Penny Wing Brojure, LLC |
| Candise Holmlund Weatherly Asset Management | Sue Loftin The Loftin Firm, PC | Bridy Oreshack Asset Protection & Wealth Management, LLC | Debbie Solomon Kid Ventures | Jessica Woolfrey RAR Hospitality |
| Patricia Hopkins La Costa Solutions for Women | Michelle Low VAVI Sport & Social | Maria Palmieri Palmieri Law APLC | Lisa Solomon Salford Systems | Wilma Wooten, MD County of San Diego Health and Human Services Agency |
| Jaime Howe-Stolis Bill Howe Family of Companies | Catherine Magana WWM Financial | Jacqueline Parks US Trust | Shauna Son Motive Interactive Inc. | Amber Yoo SKY Facial Plastic Surgery, Inc. |
| Zeynep Ilgaz Confirm Biosciences, Inc. | Silvia Mah, PhD Hera Labs | Lynne Parshall Isis Pharmaceuticals, Inc. | Kimberly Srisark Sydnee's Pet Grooming | Terri Yurek Terri Yurek Insurance Services Inc. |
| Alyson Jamison Stalwart Communications | Kimberly Manhard Ardea Biosciences, Inc. | Patricia Perez Ogletree, Deakins, Nash, Smoak & Stewart, PC | Shirley Stanley Ortho Organizers, Inc. | Helen Zeldes Bliss 101 |
| Sharon Jenks SOST Experience | Kristin Martin Ardea | Kathleen Petrone Academy for Public Speaking | Susan Steele Deloitte Tax LLP | Dana Zimbric Classics 4 Kids |
| Kara Jensen Bop Design | Allison Maslan Allison Maslan International, Inc. | Cheryl Pia PIA Agency | Denise Stein Callander Concierge & Consulting LLC | |
| Terry Kalfayan University of San Diego | Cindy Matalucci The Pulse | Meredith Pieratt WSP Corporate Benefits & Insurance Services, Inc. | Anneke Stender TAG Inc. | |
| Katherine Kantardjic California State University San Marcos | Jeanne McAlister McAlister Institute | Linda Quindt Finch, Thornton & Baird, LLP | Linda Stirling UBS Financial Services, Inc. | |
| Leigh Keith Perfect Bar | Jessica McCarthy TGG Accounting | Kim Reed Perell Amobee | Meg Storer 2-1-1 San Diego | |
| Leslie Kilpatrick Willis Allen Real Estate | Meghan McCool Care Medical Transportation Inc. | Elaine Richardson San Diego Association of Governments (SANDAG) | Linda Sweeney Corporate Directors Forum | |
| Danna Korn Sonic Boom Wellness | Sandra McDonough Paul, Plevin, Sullivan & Connaughton LLP | Brandi Roberts Mast Therapeutics, Inc. | Joyce Tang AgilisIT | |
| Melissa Krause Latitude 33 Planning & Engineering | Mary Ann McGarry Guild Mortgage Company | Kayla Roeder Cambridge Management Group, Inc. | Carolyn Taylor Weatherly Asset Management | |
| Erin Krehbiel ACI Specialty Benefits Corporation | Ashley McGuire LifePlay Productions | Anne Thorson Environmental Lights, Inc. | Tammi Terrel AT&T | |
| Cecilia Kucharski Balfour Beatty Construction | Nicole Mehrara Barney & Barney Insurance Services, LLC, a Marsh & McLennan Agency LLC | Krystel Tien Couture Events / Elle Bridal Boutique | Anne Thorson Environmental Lights, Inc. | |
| Virginia Kuwahara UBS Financial Services, Inc. | | Tonya Torosian Promises2Kids | Pat Brown Pat Brown Productions | |

Emcees



Pat Brown
Pat Brown Productions



Susan Taylor
Scripps Health

Order tickets online at: www.sdbj.com/bizevents/

Ticket price includes a 26-week subscription to the San Diego Business Journal (\$15.00 allocated to the subscription).
Current subscribers may gift their 26-week subscription to a colleague.

For Event Information: Contact the Events Department at 858.277.6695

